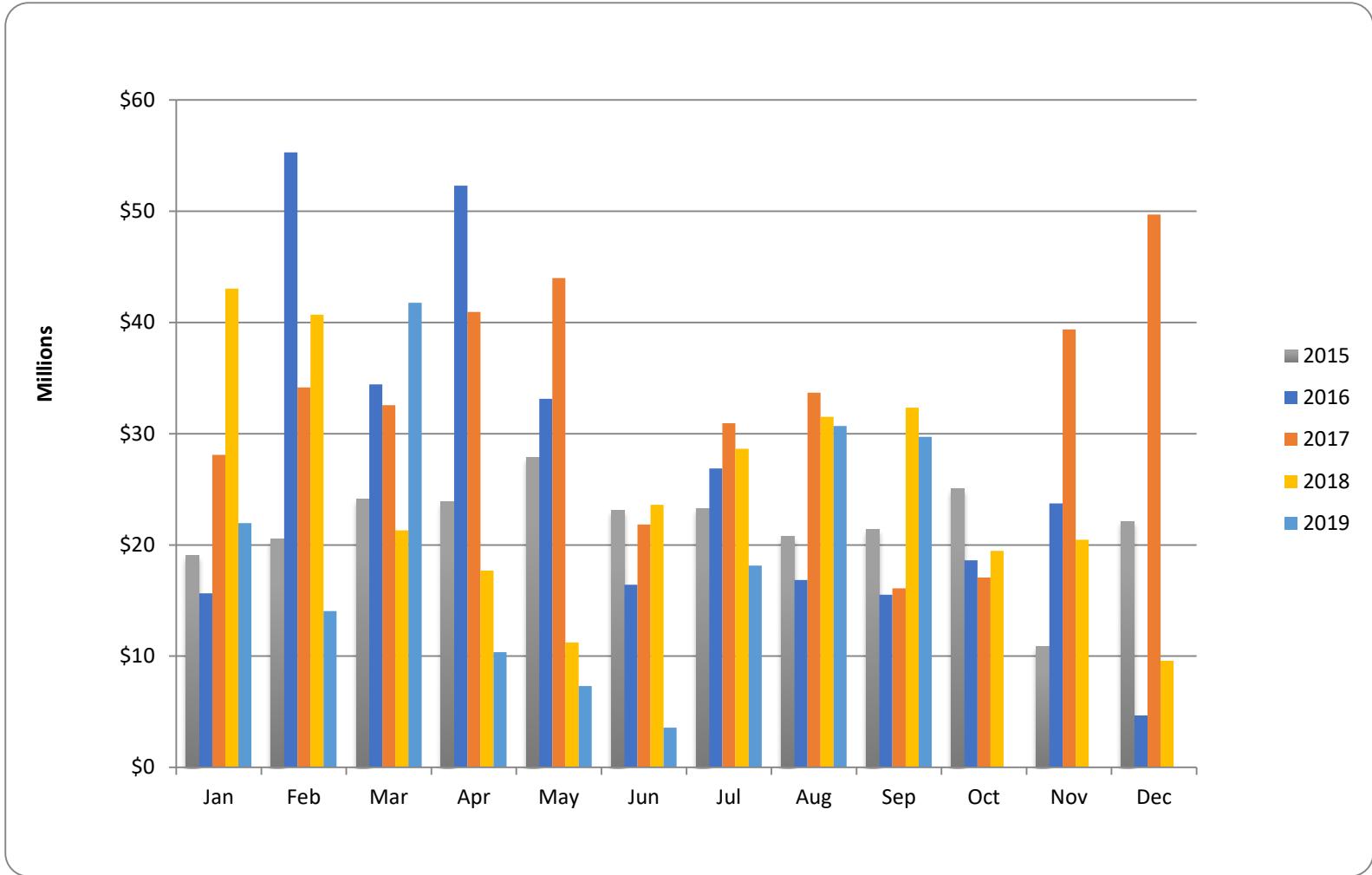




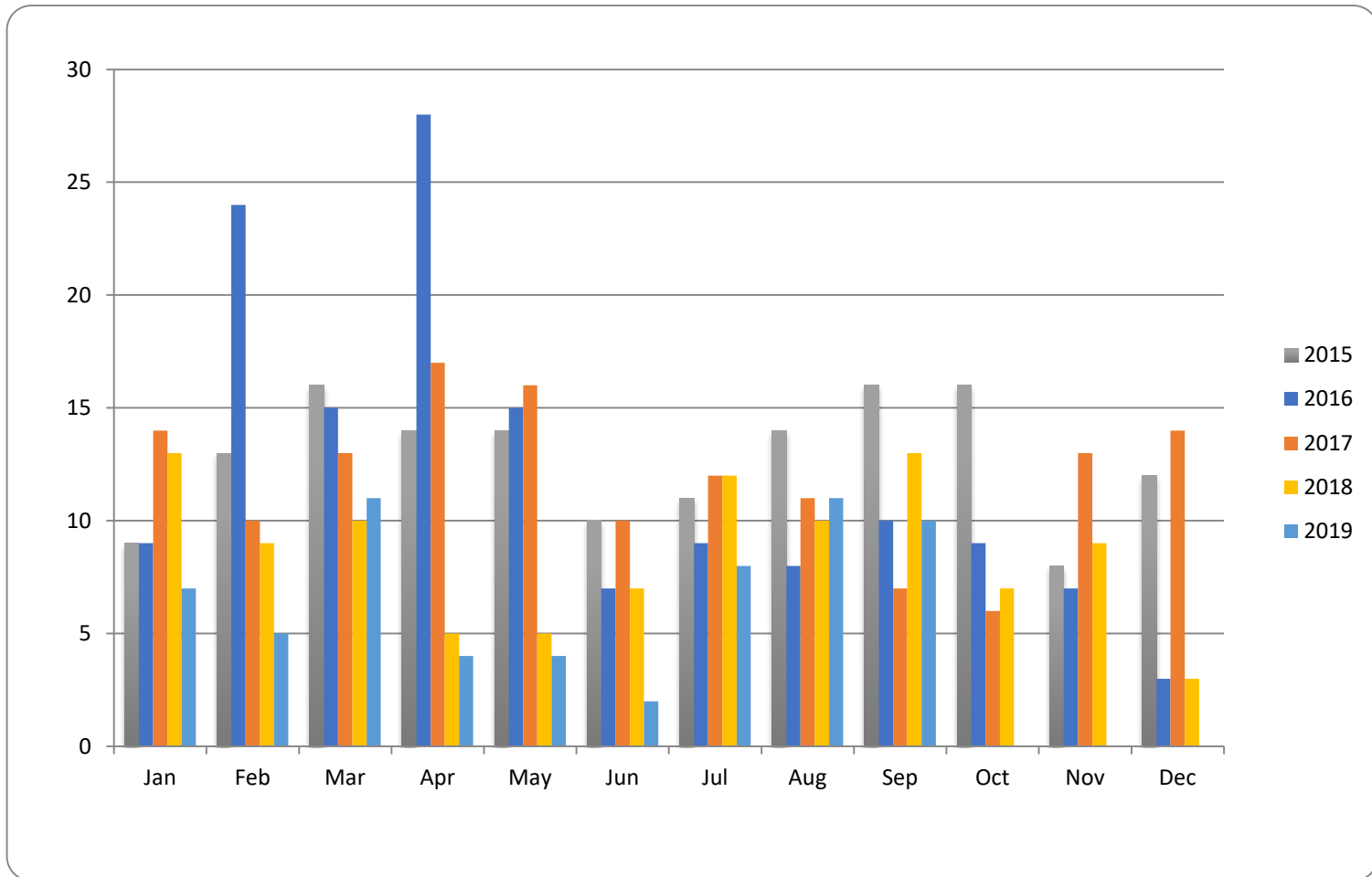
Whistler Chalet Sales – Monthly \$





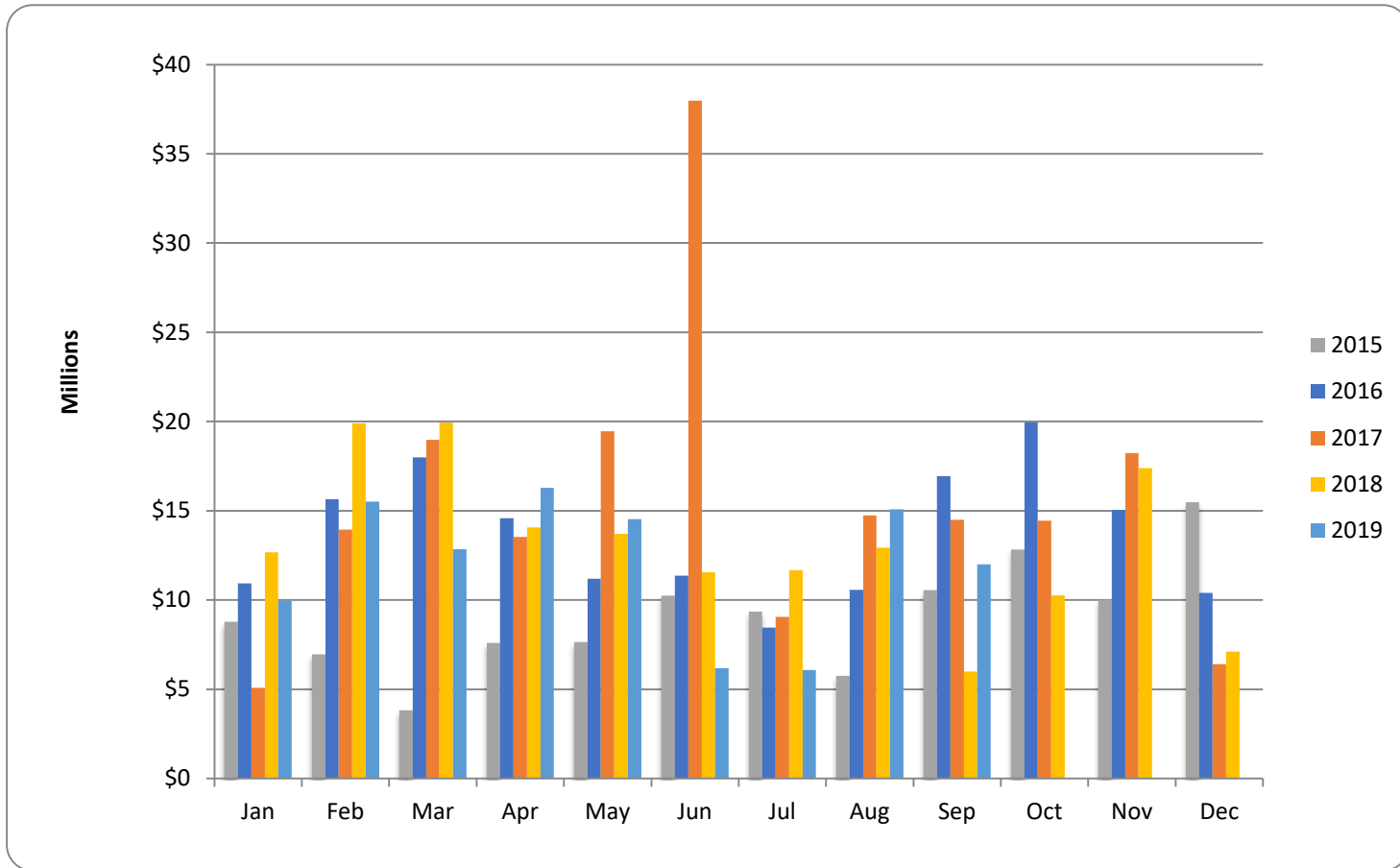
RE/MAX
SEA TO SKY
REAL ESTATE
INDEPENDENTLY OWNED AND OPERATED

Whistler Chalet Sales – Transactions





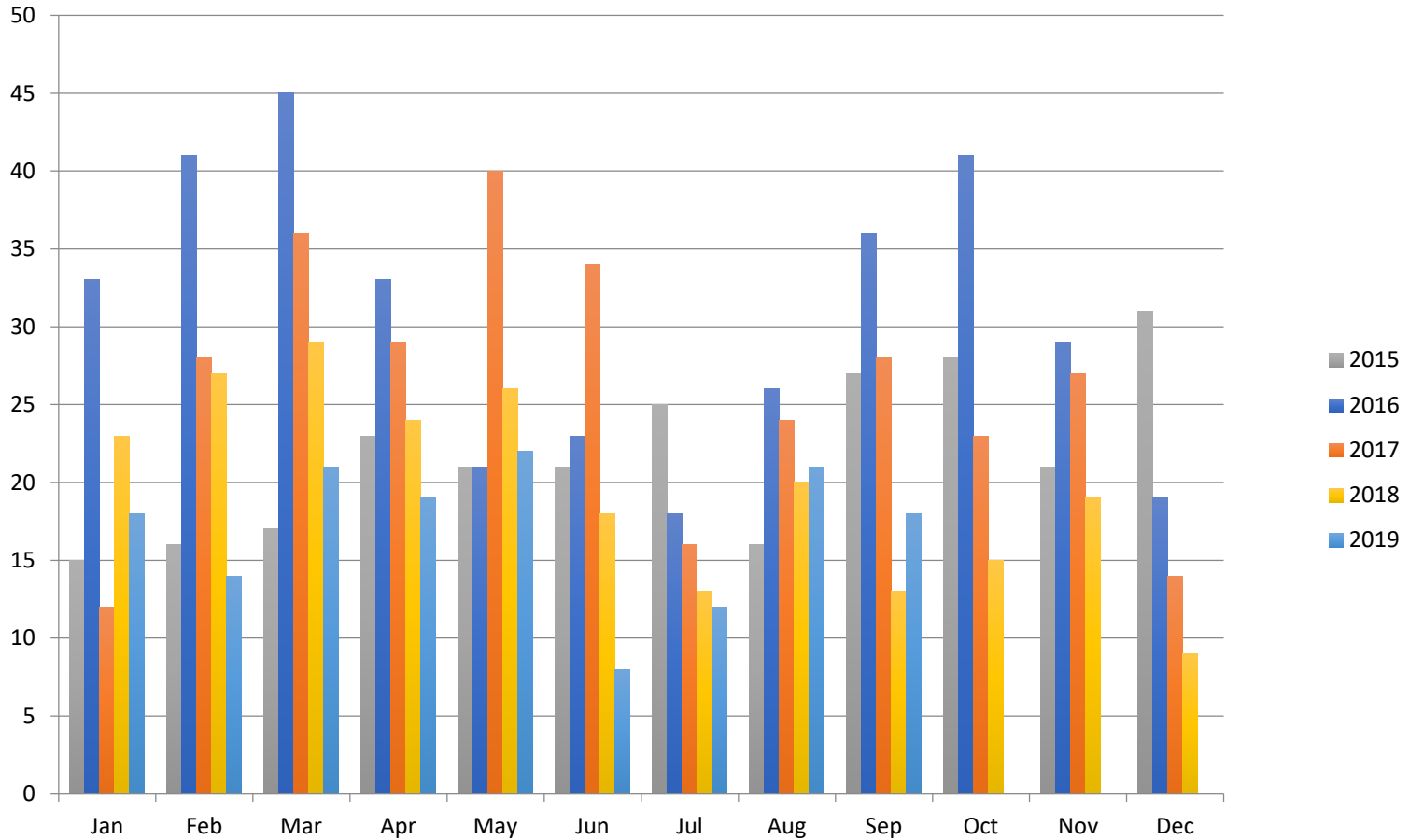
Whistler Condos: All Types – \$ Volume





RE/MAX
SEA TO SKY
REAL ESTATE
INDEPENDENTLY OWNED AND OPERATED

Whistler Condos: All Types – # Transactions



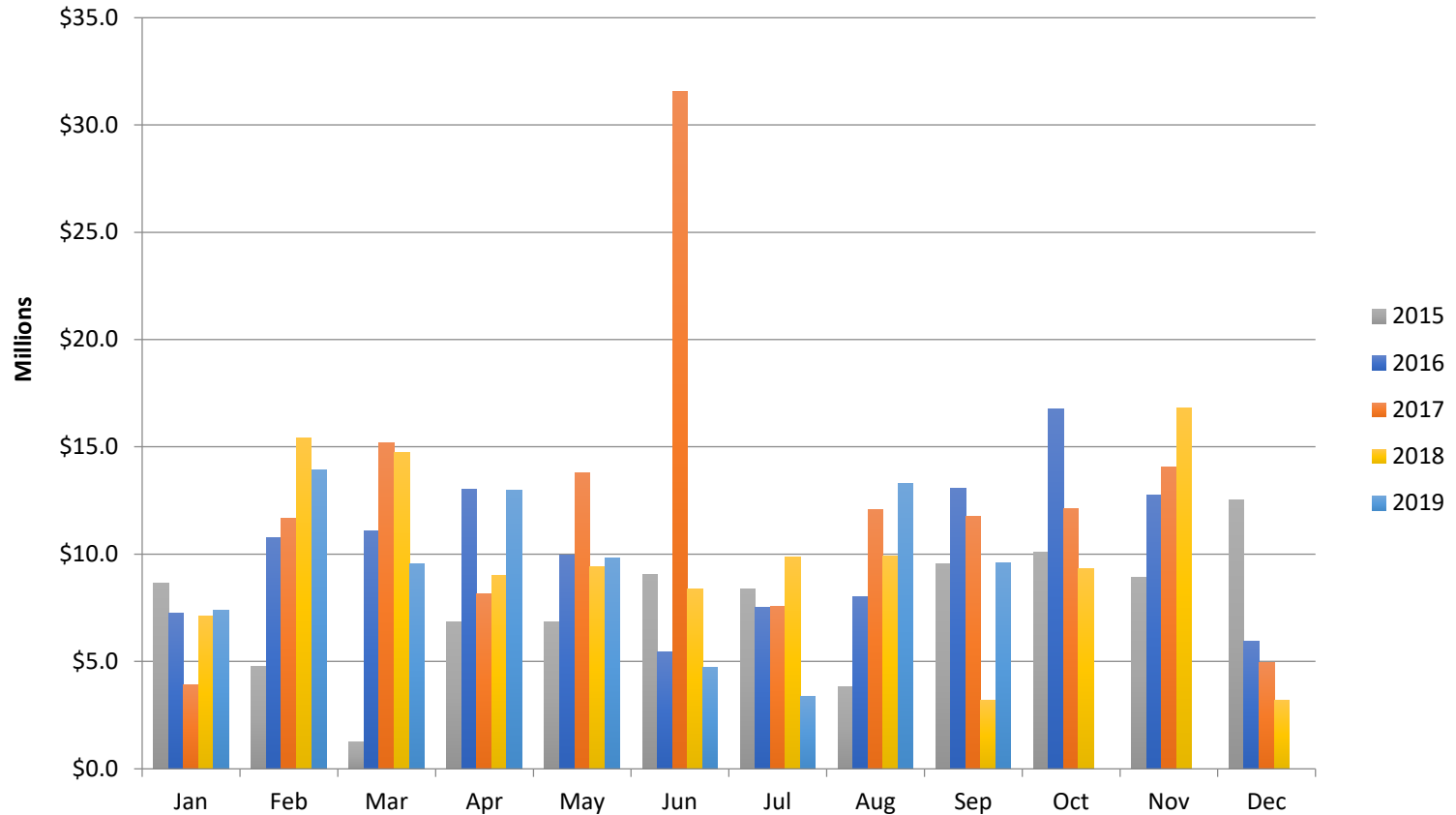
All sales information is derived from the Whistler Listing Service and is believed correct. E&OE

September 2019



RE/MAX
SEA TO SKY
REAL ESTATE
INDEPENDENTLY OWNED AND OPERATED

Whistler Condos: Phase I and Unrestricted – Monthly \$

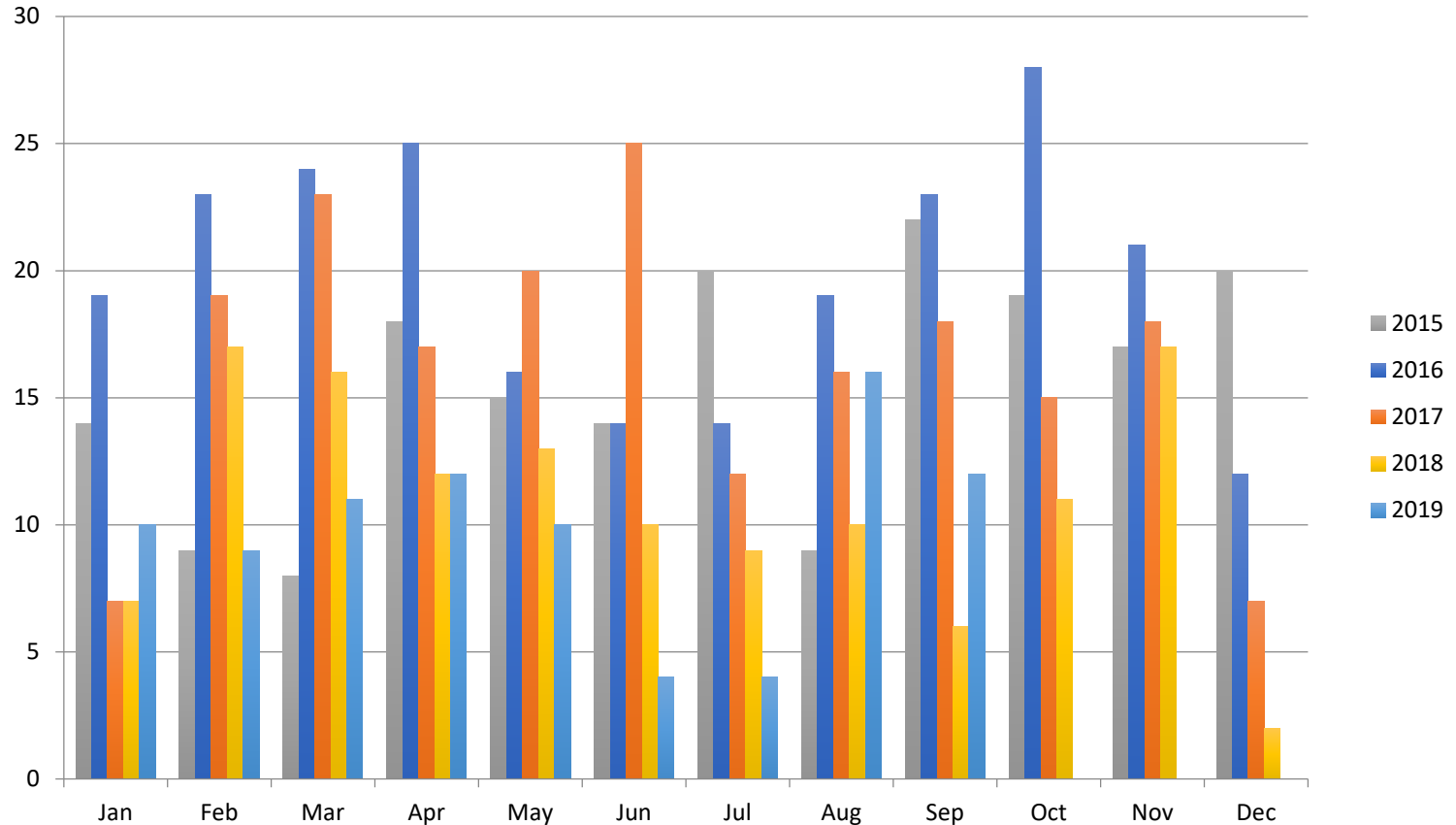


All sales information is derived from the Whistler Listing Service and is believed correct. E&OE

September 2019

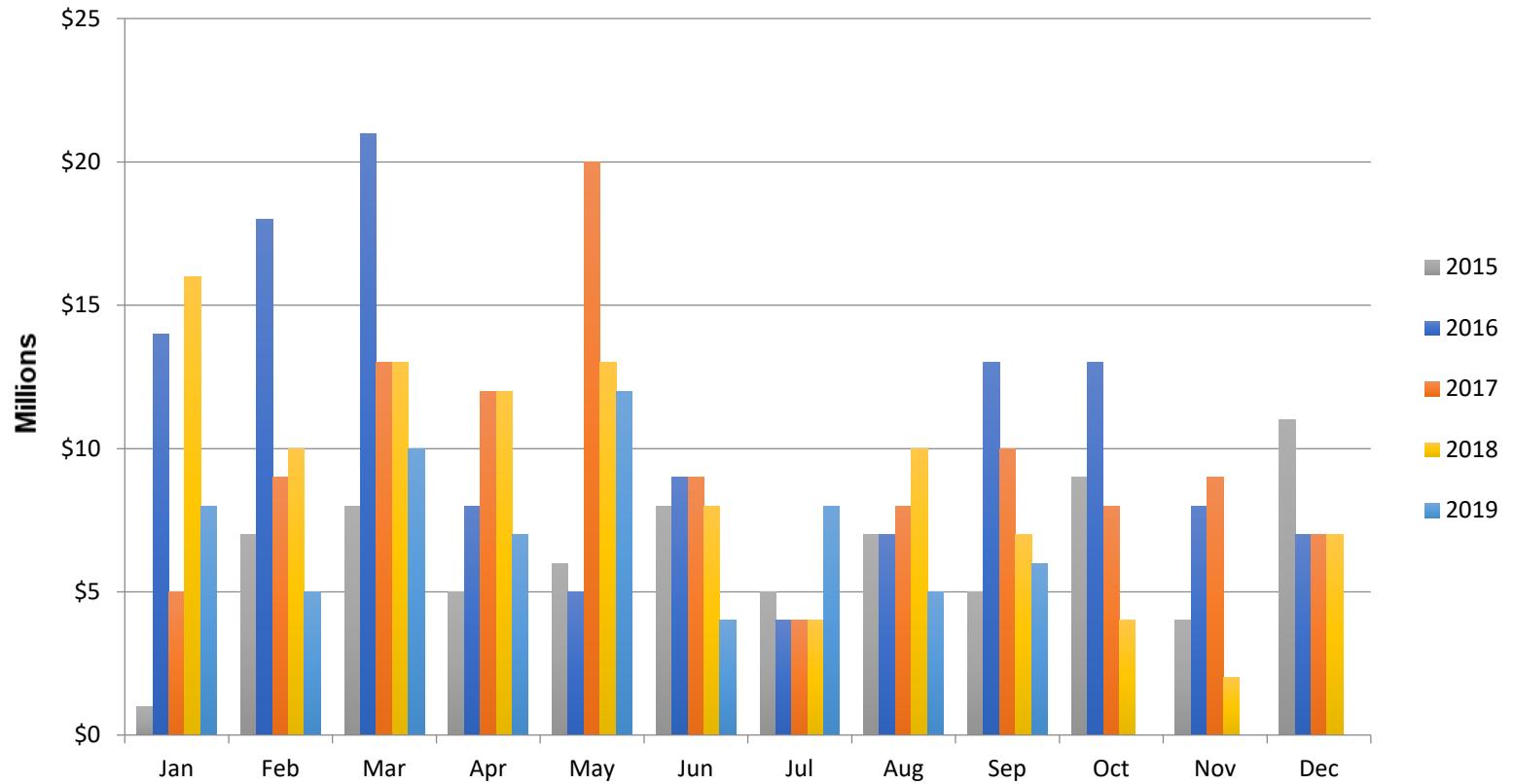


Whistler Condos: Phase I and Unrestricted - Transactions



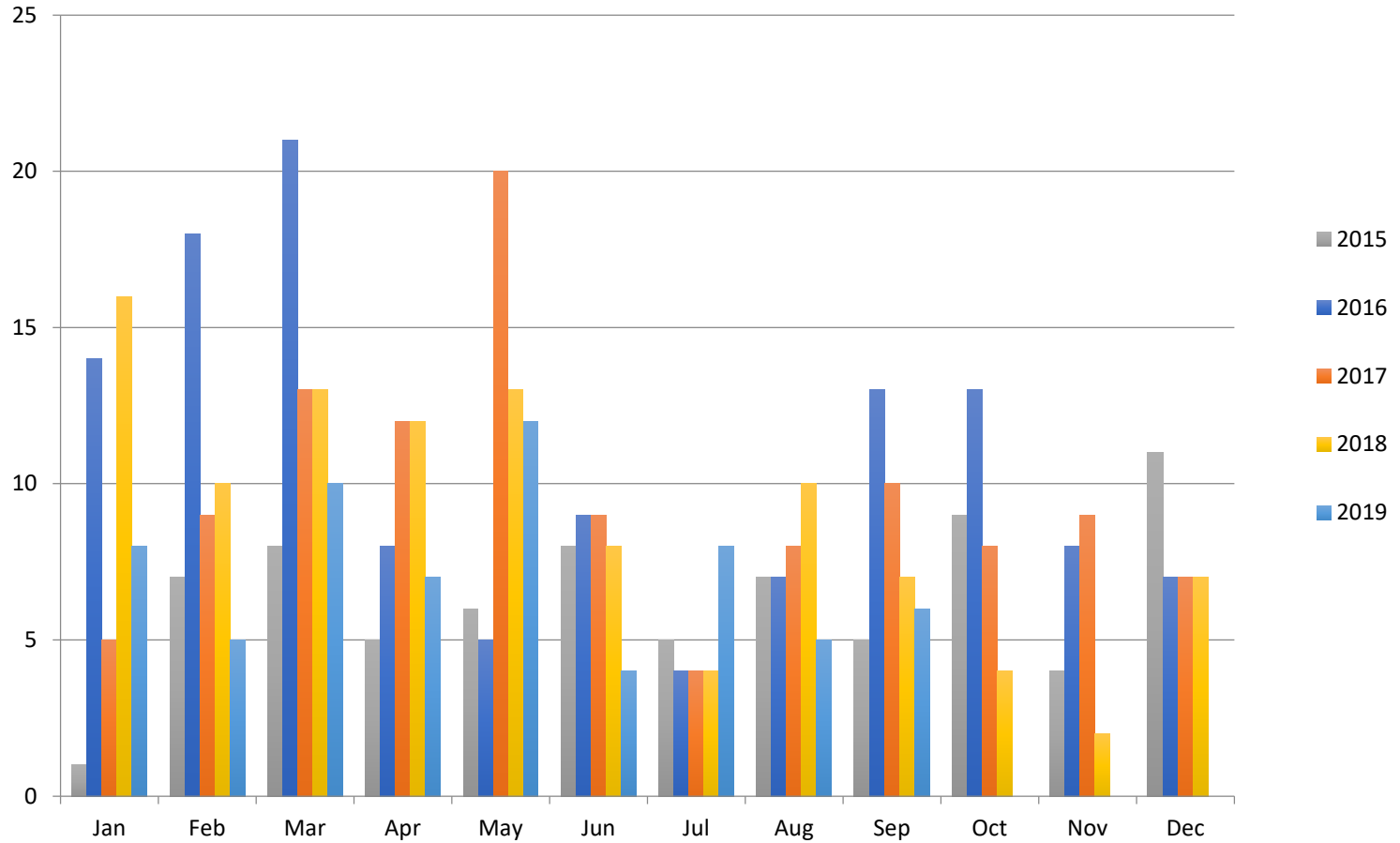


Whistler Condos: Phase II – Monthly \$



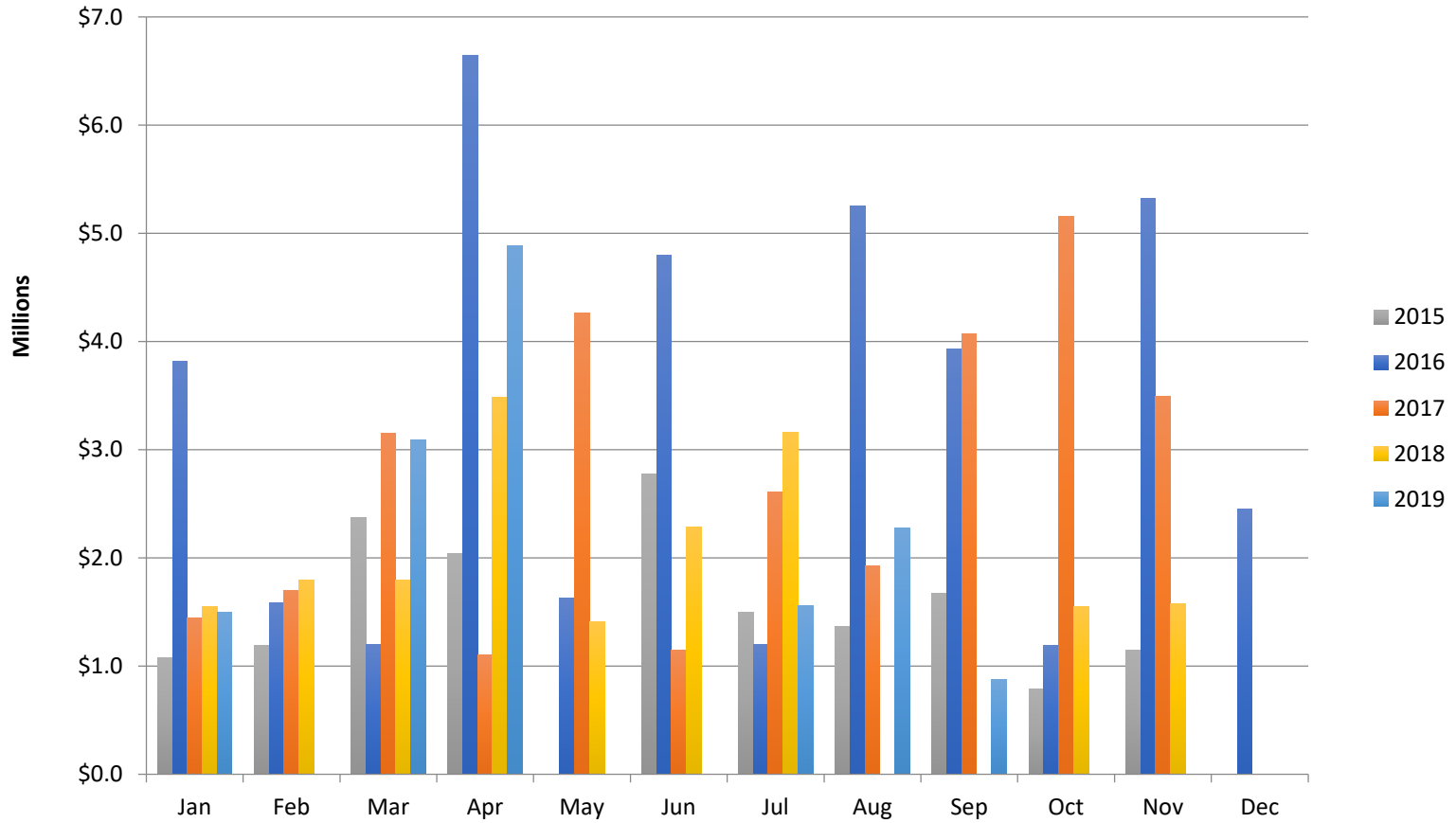


Whistler Condos: Phase II – Transactions



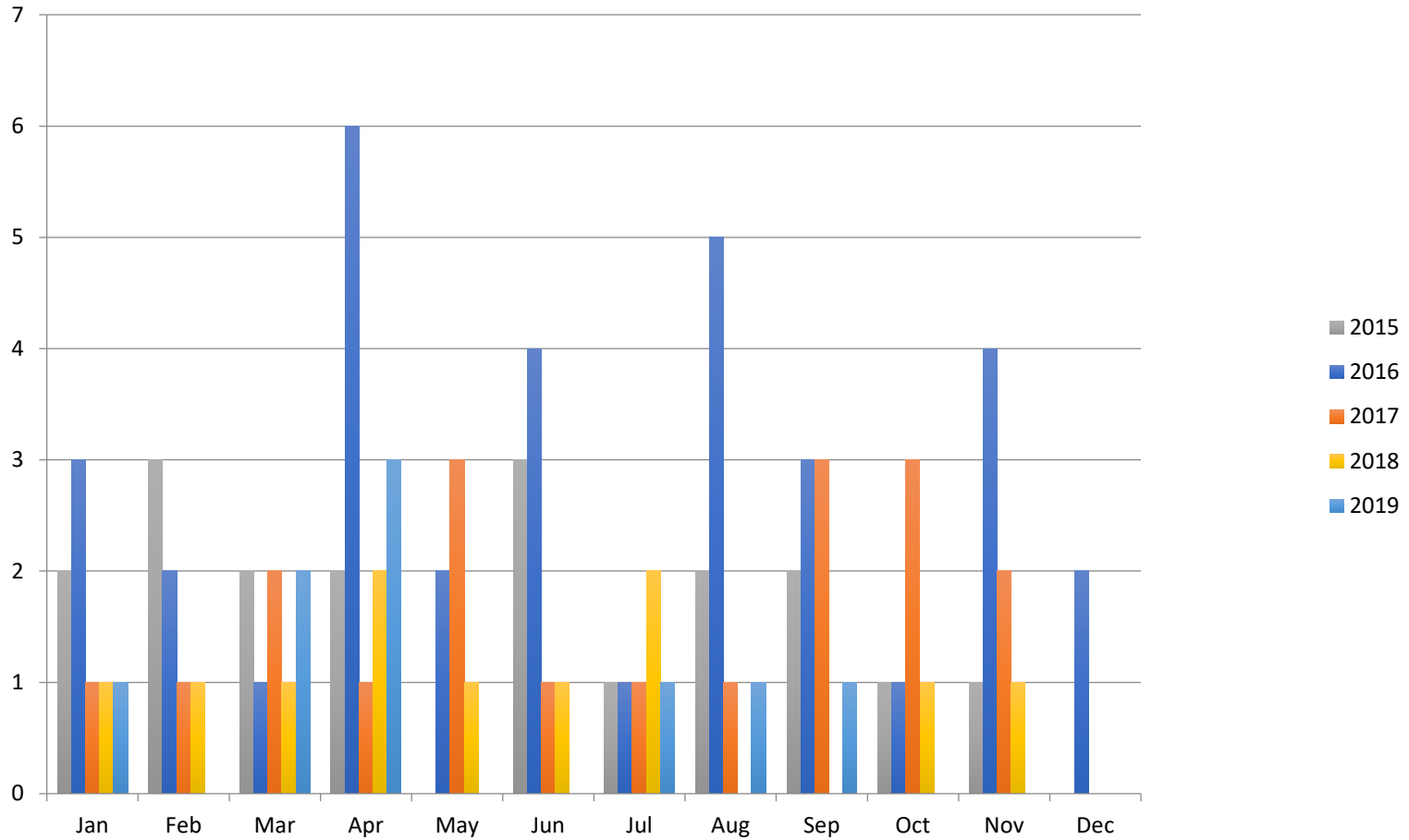


Whistler Duplex Sales – Monthly \$





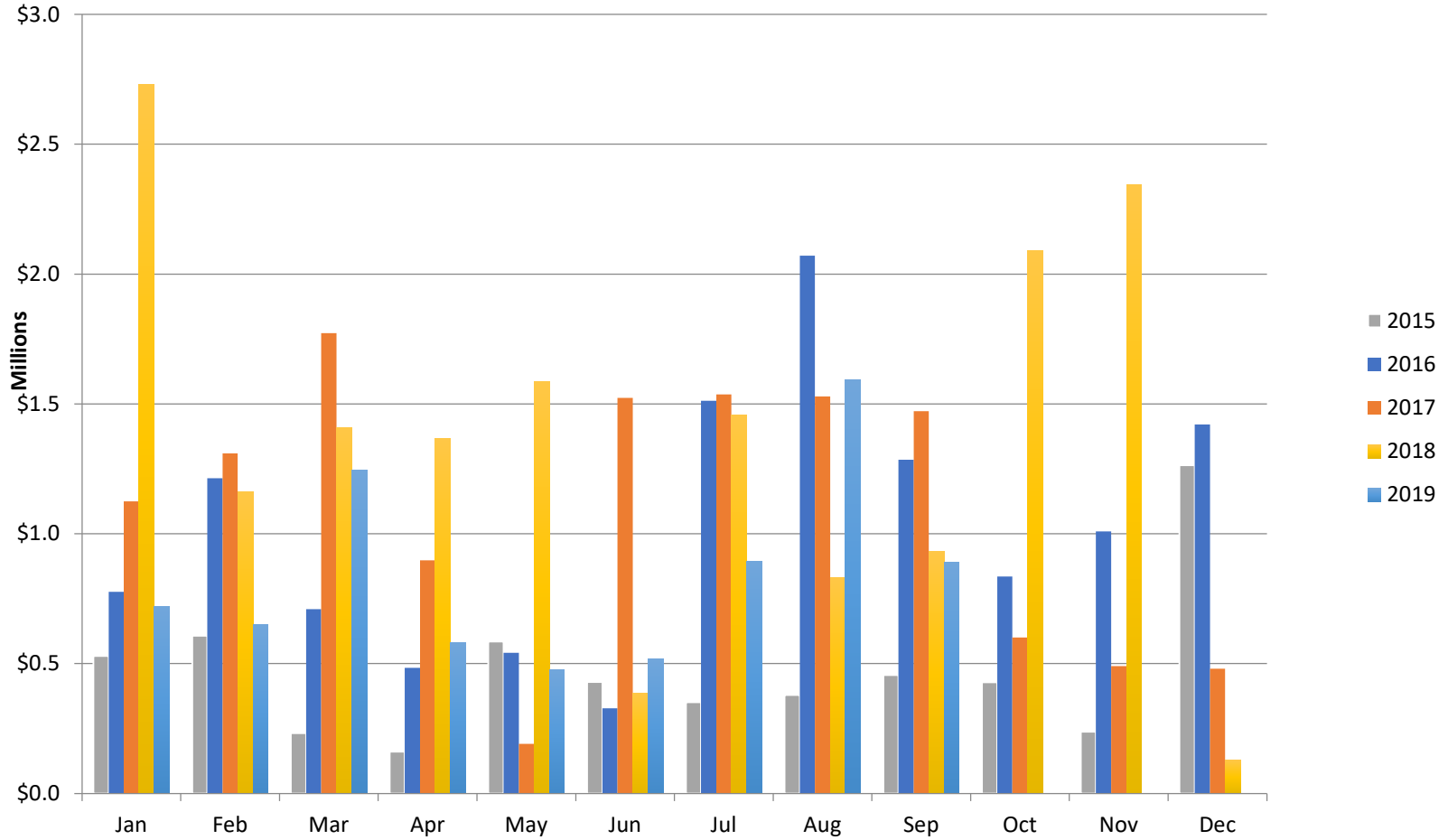
Whistler Duplex Sales – Transactions





RE/MAX
SEA TO SKY
REAL ESTATE
INDEPENDENTLY OWNED AND OPERATED

Whistler Shared Owner Sales – Monthly \$



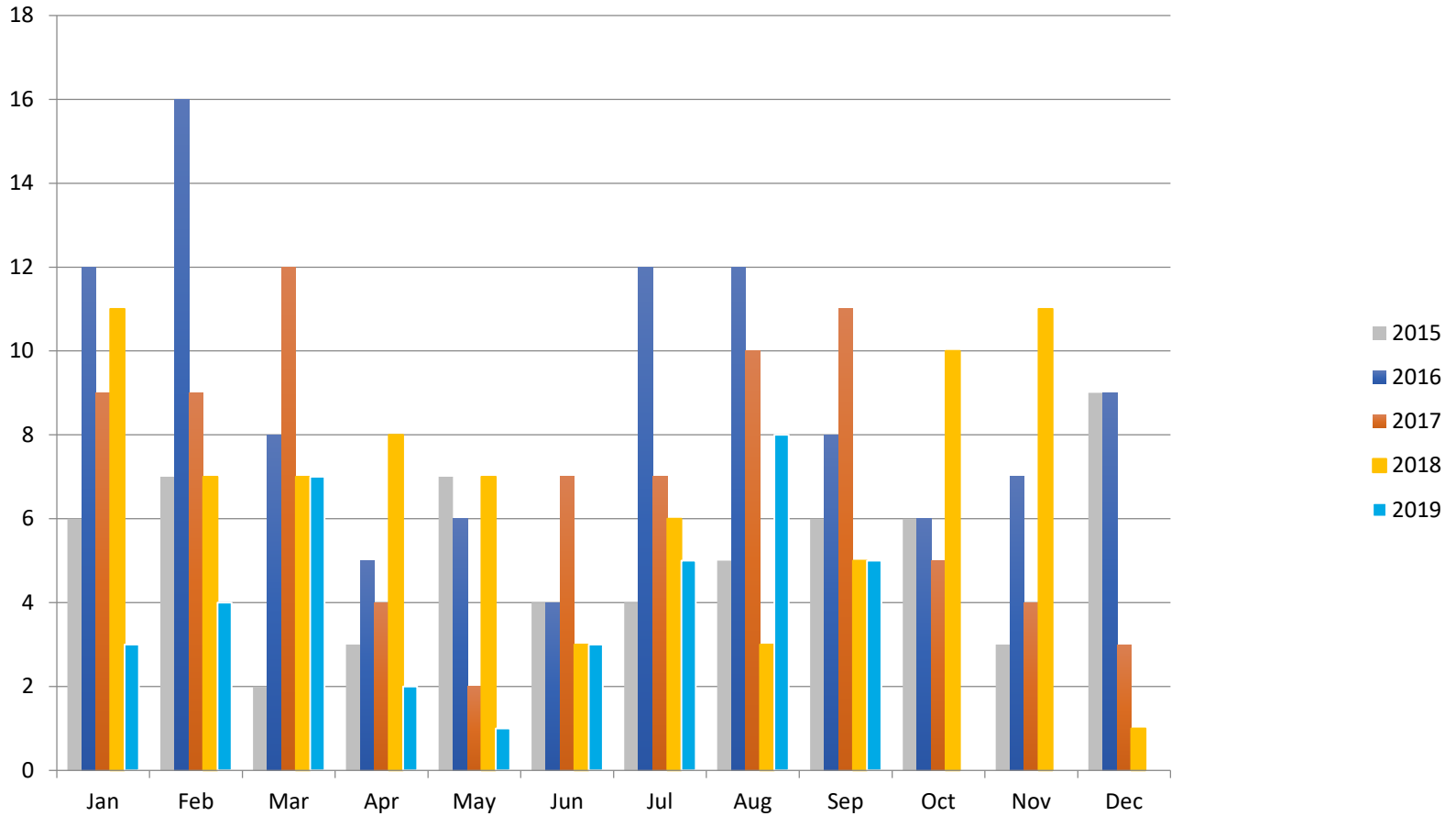
All sales information is derived from the Whistler Listing Service and is believed correct. E&OE

September 2019



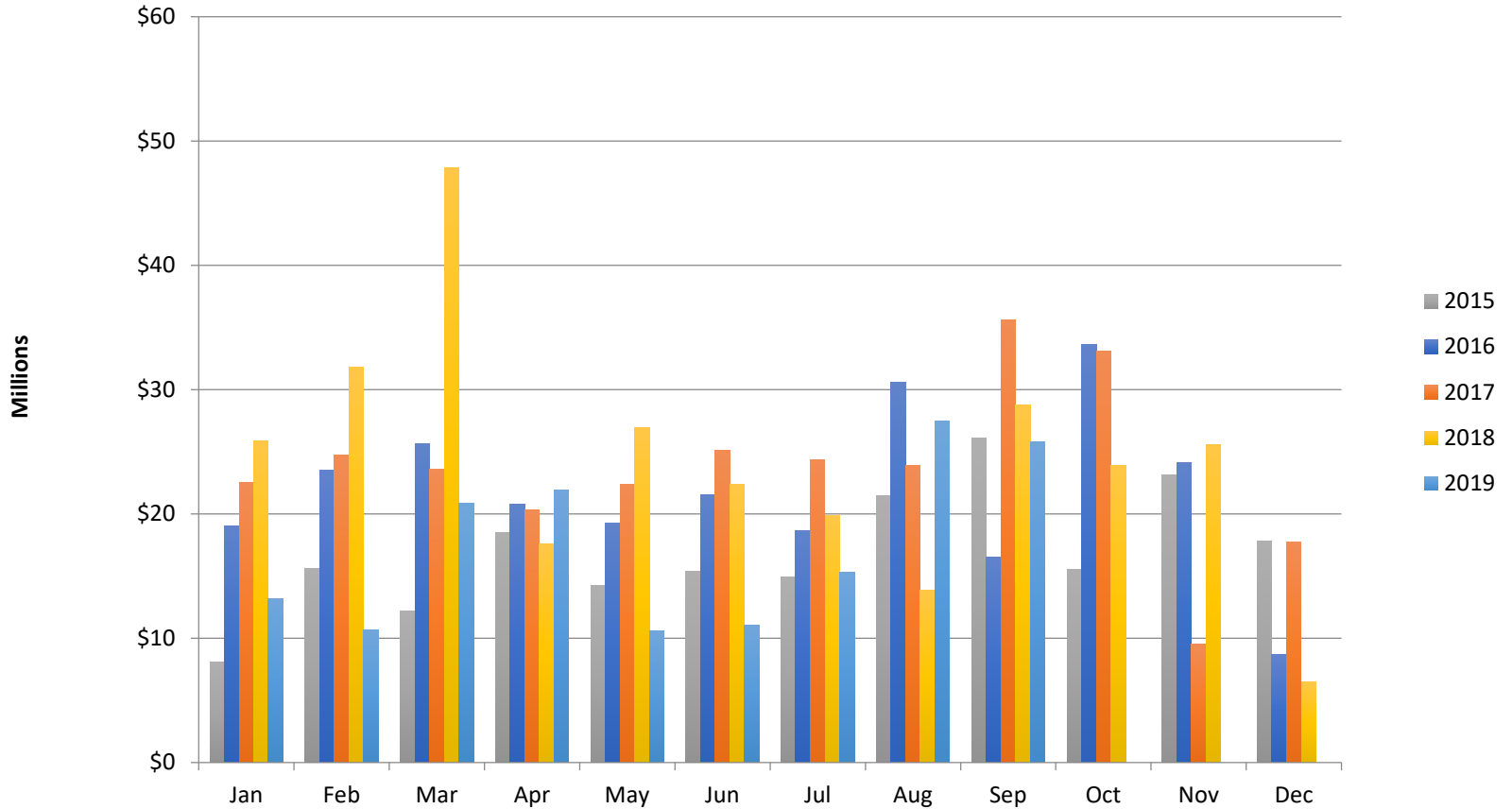
RE/MAX
SEA TO SKY
REAL ESTATE
INDEPENDENTLY OWNED AND OPERATED

Whistler Shared Owner Sales – Transactions





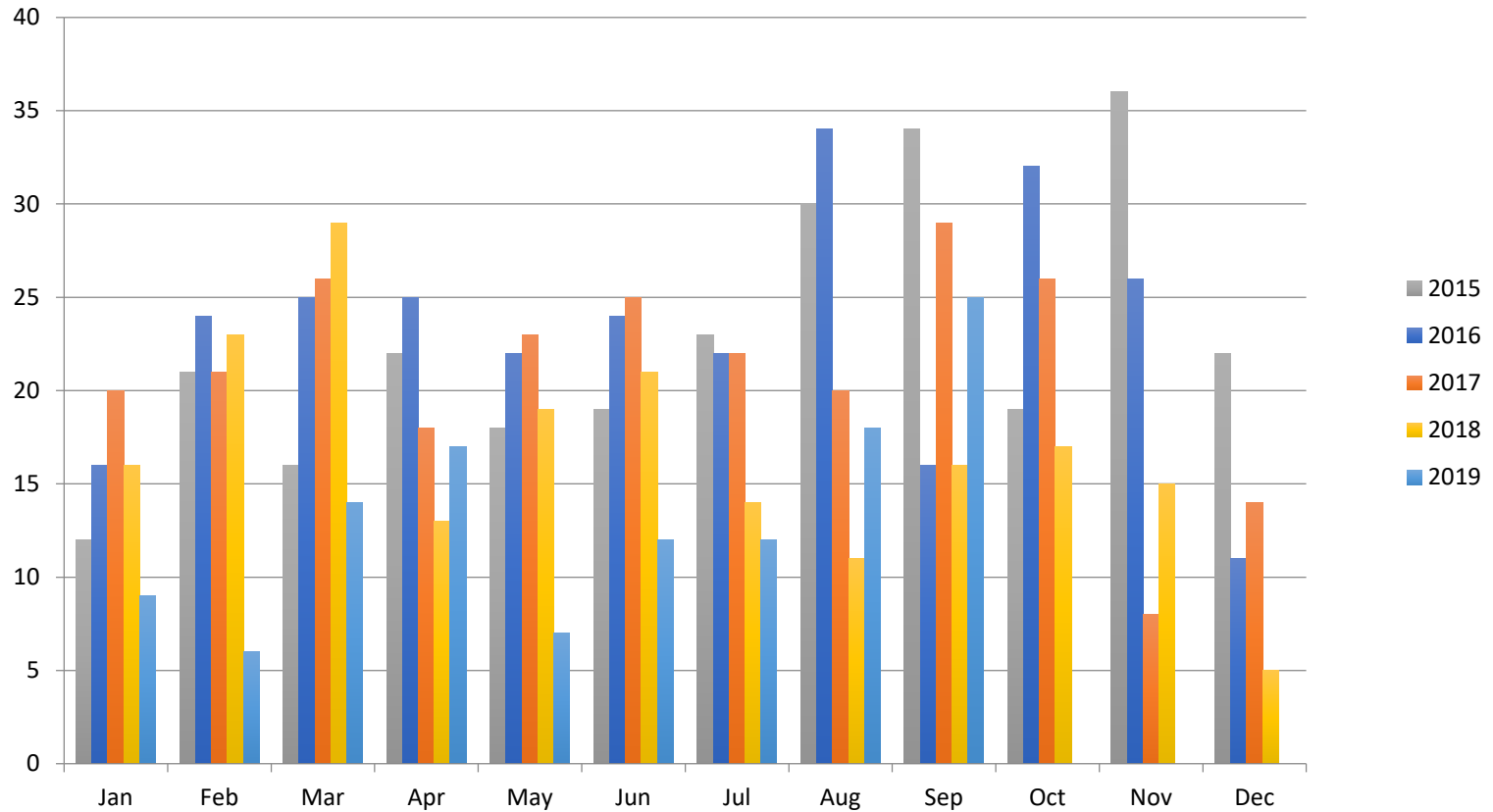
Whistler Townhouse Sales – Monthly \$





RE/MAX
SEA TO SKY
REAL ESTATE
INDEPENDENTLY OWNED AND OPERATED

Whistler Townhouse Sales – Transactions

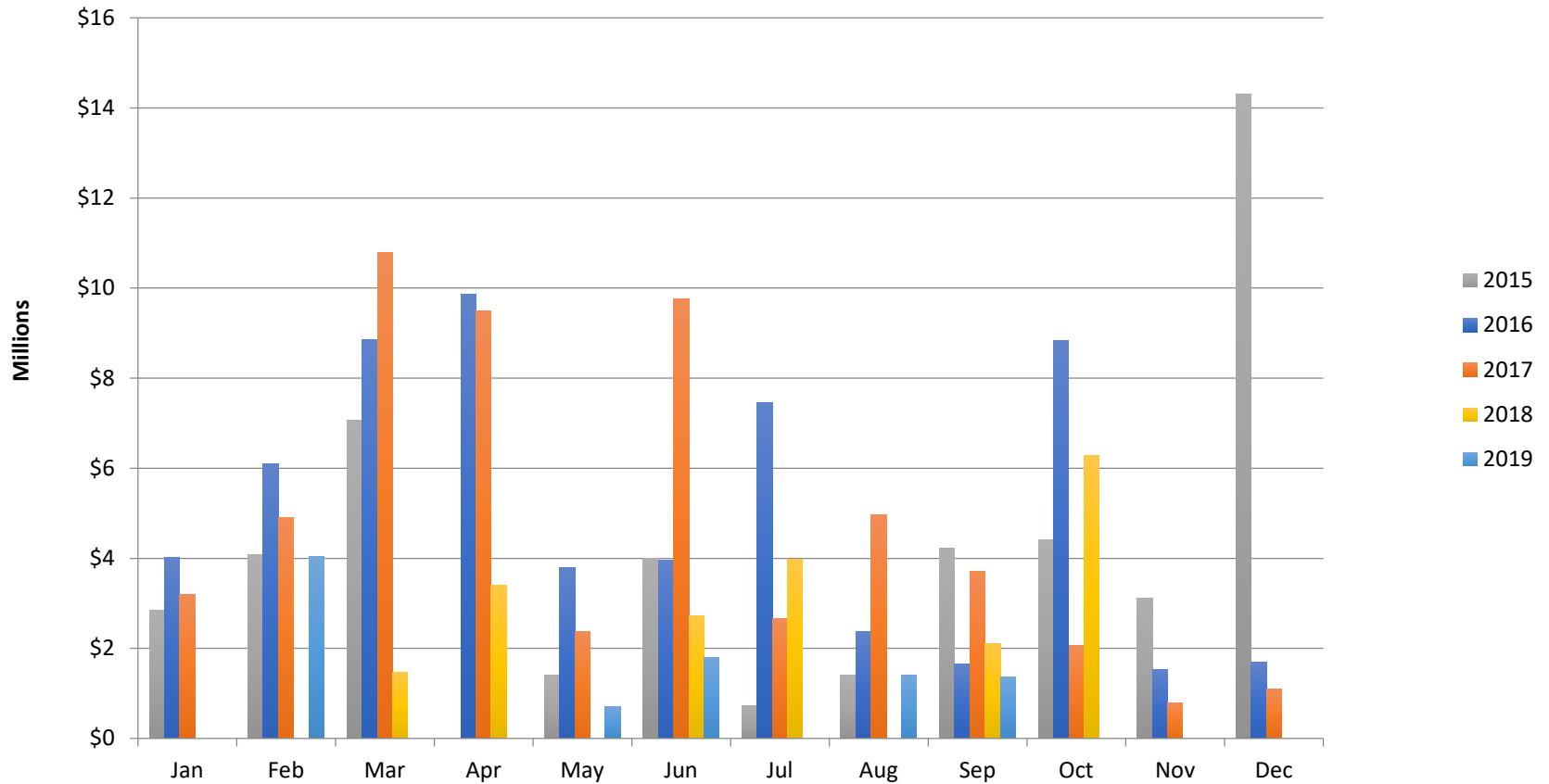


All sales information is derived from the Whistler Listing Service and is believed correct. E&OE

September 2019

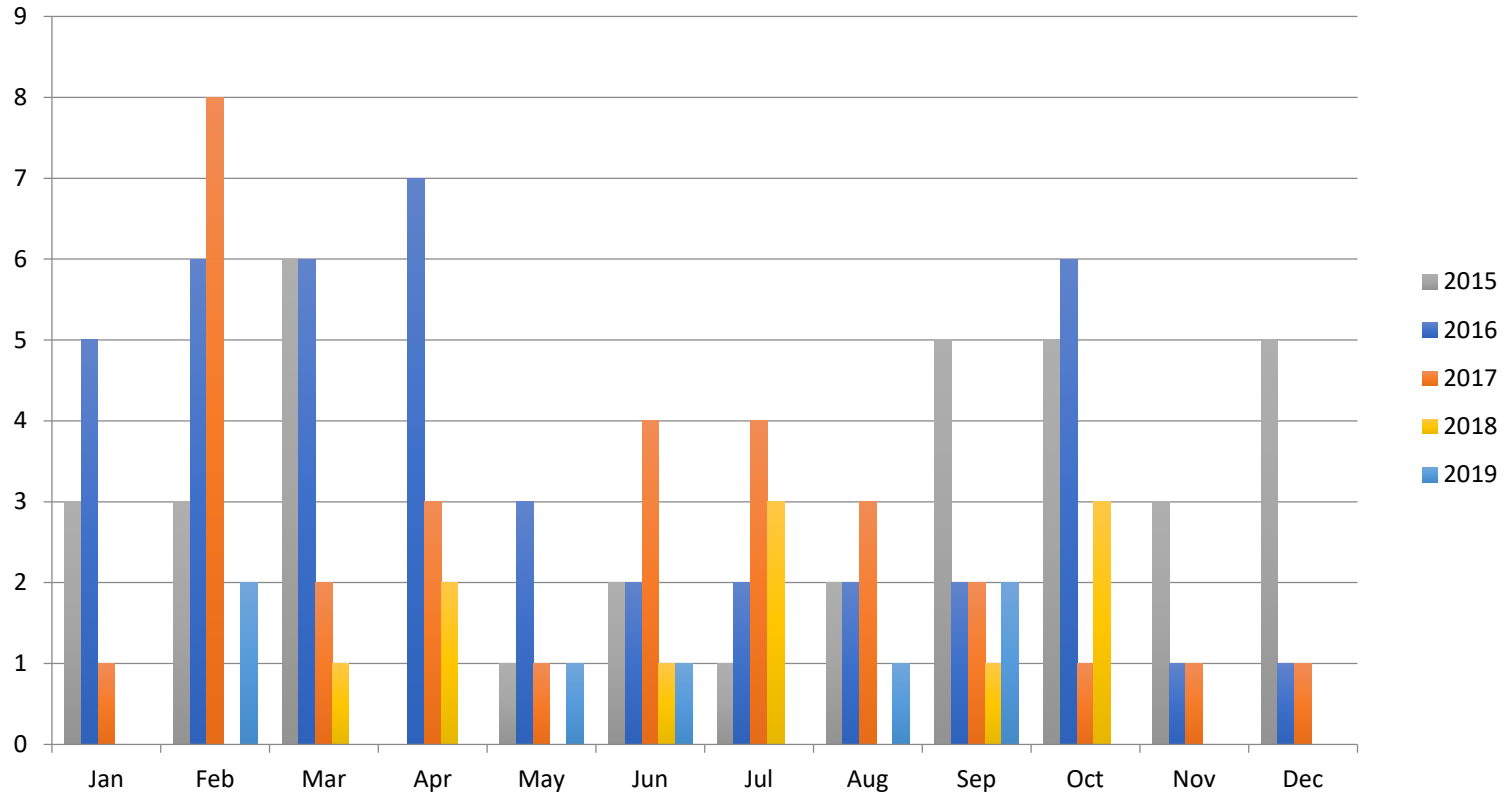


Whistler Vacant Land Sales – Monthly \$



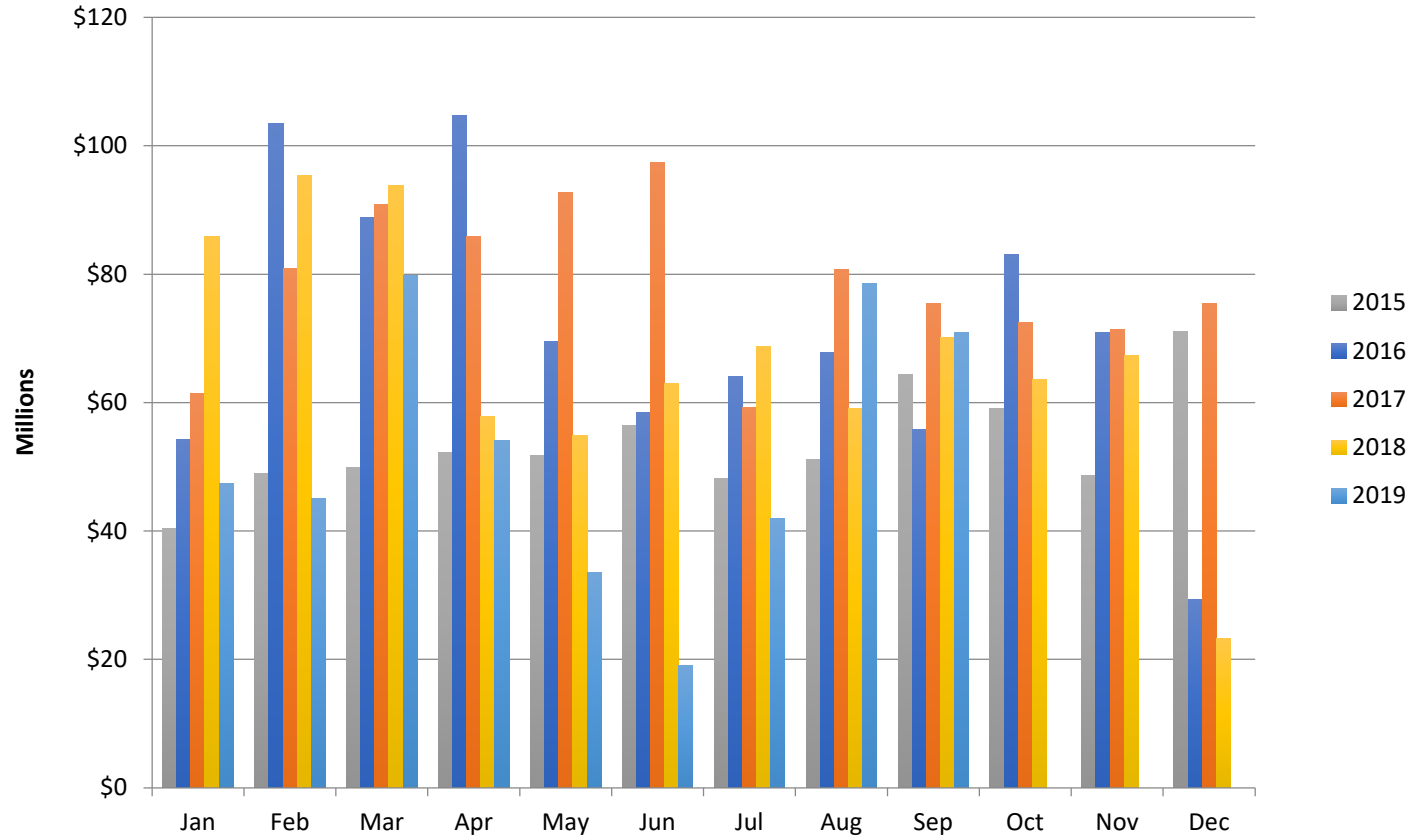


Whistler Vacant Land Sales – Transactions



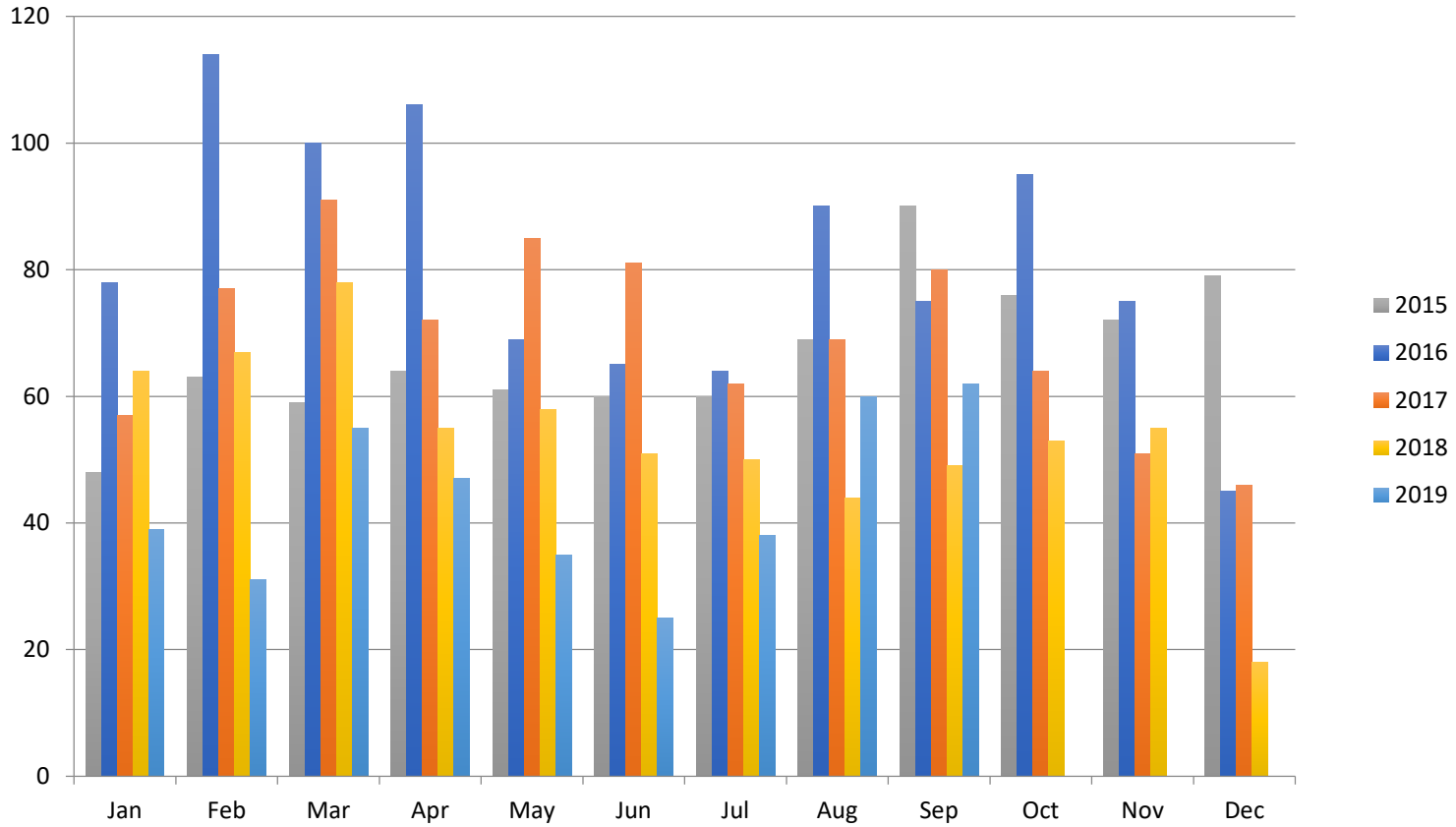


Whistler Total Sales – Monthly \$





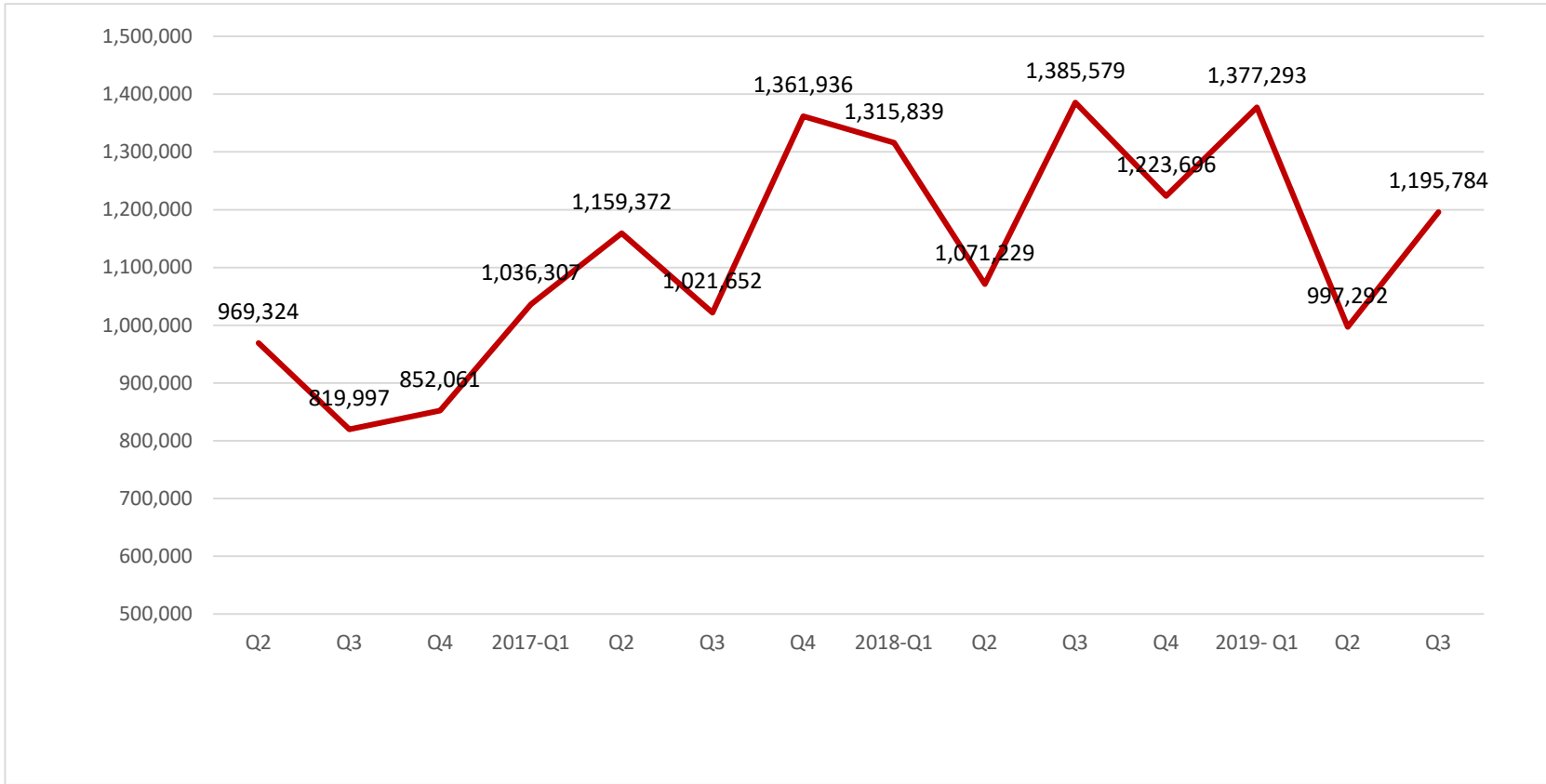
Whistler Total Sales – Transactions





RE/MAX
SEA TO SKY
REAL ESTATE
INDEPENDENTLY OWNED AND OPERATED

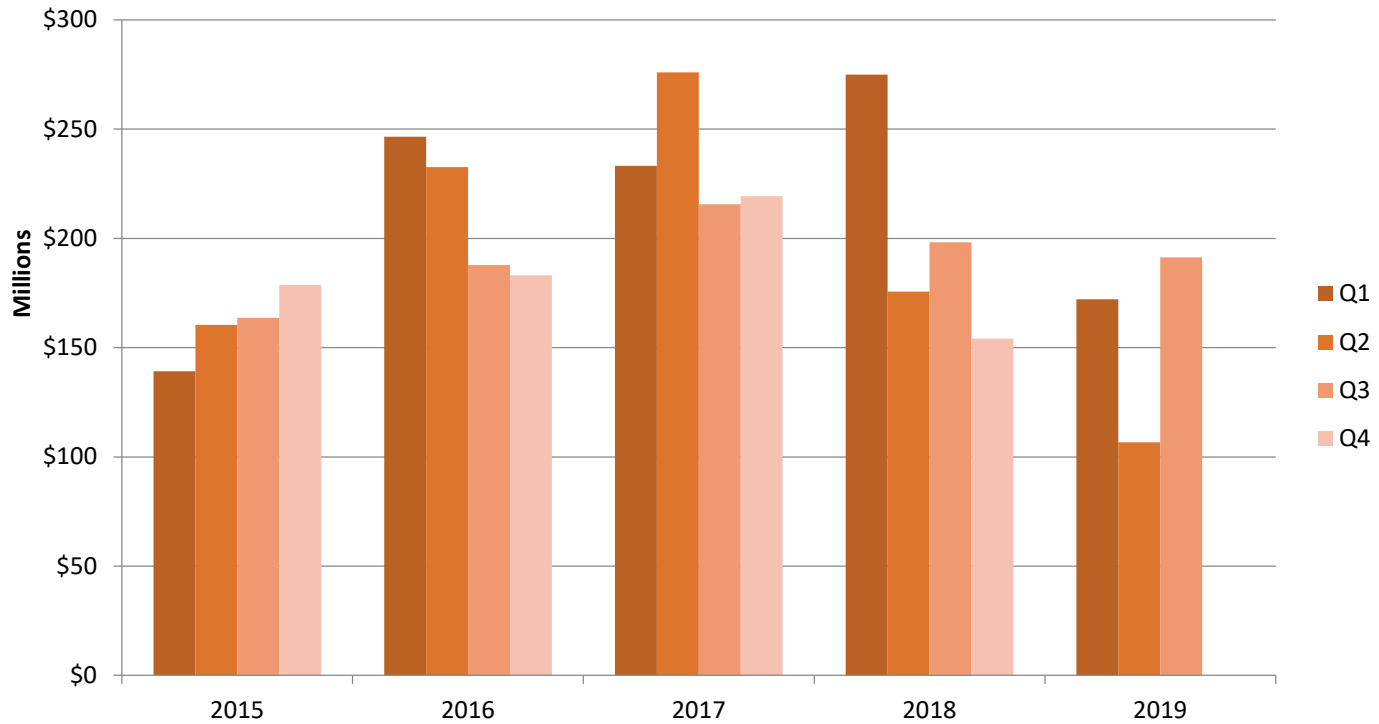
Average Sale Price by Quarter



Please note this chart does not indicate property value trends, only the average price of properties that actually sold for that quarter.



Sales - \$ Volume Quarterly





Sales - Units Quarterly

